

EU Policy on Disaster Risk Assessments & Overview of Risks

State of Play 2014

EU Policy context

Developing National Risk Assessments

Overview of Risks

Looking ahead

EU Policy Context

Civil Protection from **voluntary** to **commitment** set out in legislation:

- Union Civil Protection Mechanism (Decision No.EU/1313/2013)

Article 5 1.(b) – COM support/promote MS risk assessment activities

Article 5 1.(c) – COM cross-sectoral overview and map

Article 6(a) – MS deadline December 2015

Other EU policies:

- Ex-ante conditionality for Cohesion policy (deadline 2016)

Thematic Objective 5 *Promoting climate change adaptation, risk prevention and management*

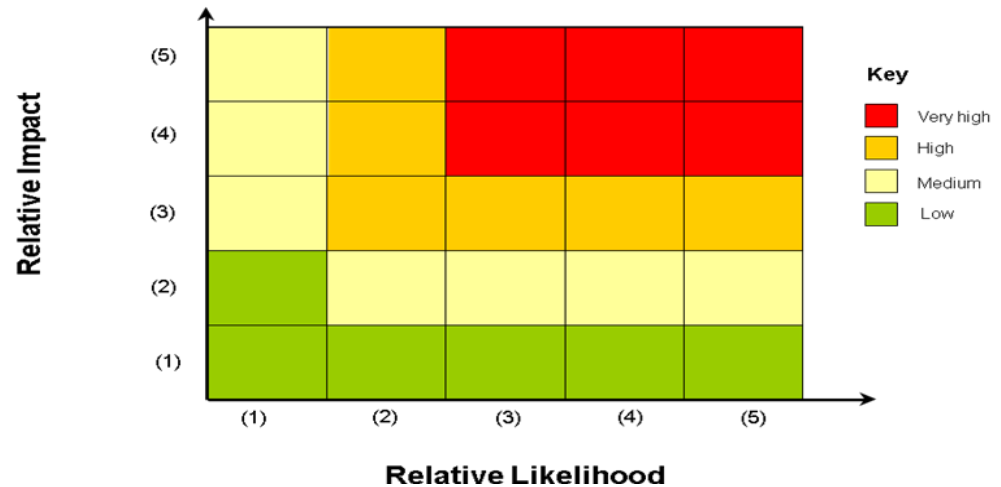
Developing National Risk Assessments

Risk Assessment and Mapping **Guidelines** for Disaster Management, SEC(2010) 1626 final, 21.12.2010

Information from **21 Participating States**

Data comparability

- Clear terminology
- Clear methodology
- Use of risk matrix:



List of hazards included in National Risk Assessments

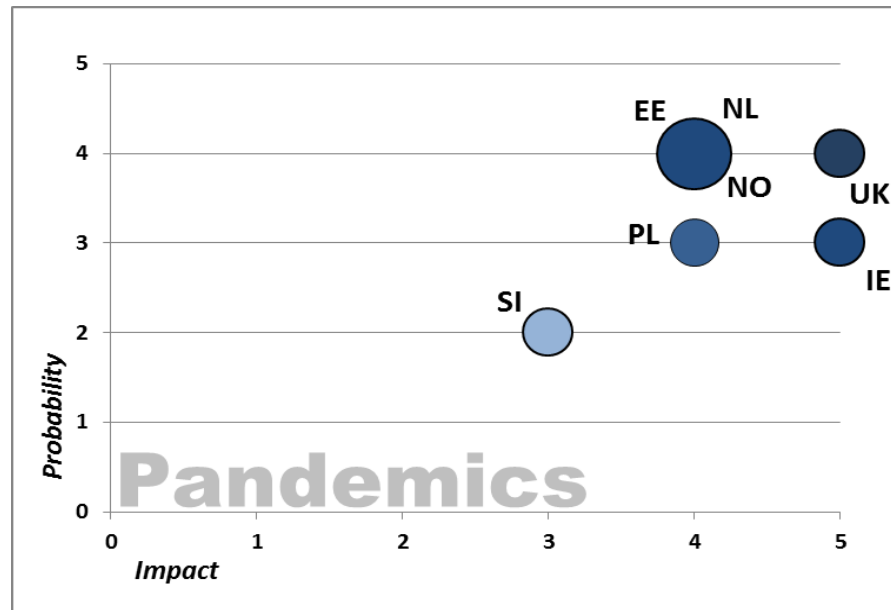
Natural hazards	Frequency of denomination
Floods	20
Severe weather	17
Pandemics/epidemics	14
Wild/Forest fires	13
Livestock epidemics	12
Earthquakes	10
Landslides	8
Droughts	8
Space weather	4
Volcanic eruptions	3
Harmful organisms	2
Tsunamis	2

Man-made hazards	Frequency of denomination
Industrial accidents	16
Nuclear/radiological accidents	15
Transport accidents	11
Terrorist attacks	9
Cyber-attacks	8
Loss of critical infrastructure	8
Disruption in supply	6
Public disorder	5
Environmental/Marine/coastal pollution	3
CBRN attacks	3
Water/food contamination	2
Refugees/unmanaged migration	2
Crisis outside the EU	1

National Risk Assessments Measuring Impact and Probability

Consequences/Impact							Probability								
AT	1 2 3 4 5					1 2 3 4 5									
SI	1 2 3 4 5					1 2 3 4 5									
LT	1 2 3 4 5					1 2 3 4 5									
PL	A B C D E					1 2 3 4 5									
NL	A Limited	B Substantial 3xA	C Serious 3xB	D Very serious 3xC	E Catastrophic 3xD	1 Highly unlikely	2 Unlikely 10x1	3 Moderately likely 10x2	4 Likely 10x3	5 Highly likely 10x4					
UK	1 2 3 4 5					Low 1:20000-1:2000	Medium low 1:2000-1:200	Medium 1:200-1:20	Medium high 1:20-1:2	High >1:2					
EE	A Insignificant	B Light	C Serious	D Very serious	E Catastrophic	Very low	Low	Medium	High	Very High					
IE	Very low	Low	Moderate	High	Very High	Extremely unlikely	Very unlikely	Unlikely	Likely	Very likely					
NO	Very low	Low	Medium	High	Very High	Very Low	Low	Medium	High	Very High					
SE	Minimal	Small	Average	Significant	Very Significant	Very low	Low	Medium	High	Very high					
PT	Residual	Reduced	Moderate	Marked	Critical	Low	Medium-low	Medium	Medium-high	High					
HU	Low	Not severe	Severe	Very severe	-	Rare	Uncommon	Common	Very Common	-					
DK	Serious	-	Very serious	-	critical	-	-	-	-	-					
FI	Small	Regu- lar	Quite big	Big	Very big	Seve- re	Very severe	1:50	1:200	1:500	1: 1000	1:2000	1:3000	1:10000	1:100000

Potential for comparability?



Risk matrix based on MS assessment of pandemics risk (DG ECHO, 2014)

Overview of Risks

Council Conclusions, 11.4.2011

Union Civil Protection Mechanism: Art.5.1(c) – EC to prepare a cross sectoral overview

Commission Staff Working Document on an Overview of natural and man-made risks in the EU, SWD(2014) 134

Hazards addressed in the Overview

Category	Hazard
Natural hazards	Floods
	Severe weather
	Wild/Forest fires
	Earthquakes
	Pandemics/epidemics
Man-made hazards	Livestock epidemics
	Industrial accidents
	Nuclear/radioactive accidents
	Transport accidents
	Loss of critical infrastructure
	Cyber attacks
	Terrorist attacks

Observations

Main risks in NRAs confirms **existing legislation** (floods, industrial accidents) and areas of **potential cooperation** at European level (cyber-attacks, pandemics, etc.)

Relevance of **cross-border dimension**: geographical nature, scope and scale of impact

Impact of **climate change**: increased severity and frequency of natural events - threat multiplier - importance of adaptation

Looking ahead

Policy relevance

- Climate change adaptation; environment; health; agriculture; energy; transport; industry; security and defense; research; regional policies
- Integrated threat assessment (Solidarity Clause)
- Risk Management Capability Assessment Guidelines

Cross-sectoral & cross-border approach – cascade effects

Building on existing cooperation – Danube and Baltic initiatives

Emerging risks – climate change, space weather, etc.

Developing risk assessments through research and pilot projects

- FP7 Projects MATRIX, ENHANCE
- Horizon2020 call 'standardised risk assessment methods'
- Civil Protection projects BE-AWARE (2), PRISMA, HAREN, DamSafe, PREEMPT